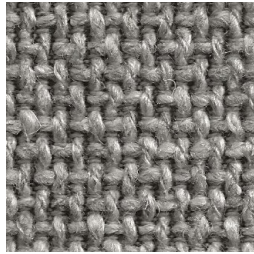
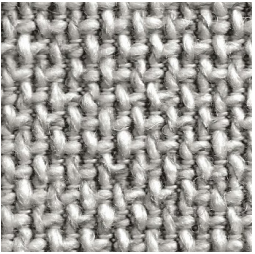




01 Shine



02 Amour



03 Spirit

<b>Name:</b>	Sorella
<b>Number:</b>	2040
<b>Width:</b>	55"
<b>Content:</b>	32% Cotton 25% Recycled Wool 25% Recycled Polyacrylic 12% Polyester 4% Wool 2% Polyacrylic
<b>Repeat:</b>	N/A
<b>Abrasion:</b>	36,000
<b>Flame Details:</b>	TB117-2013
<b>Care:</b>	Dry clean only Do Not Use Trichloroethylene Max iron temperature 230° F Delicate
<b>Utilization:</b>	Upholstery

This wool is playful in texture, reminding me of my sister and her playful personality. She is a constant in my life, always there as a supporter, so I chose neutral colors so that they are easily incorporated into one's space.

**Hubbard Design Group**

info@hubbarddesigngroup.com

hubbarddesigngroup.com